

Customer: **EL O MATIC GMBH**

Contact:

Customer Reference: **Anfrage 585C**Item: **100**

Rev:

Qty: **1**

Tags:

Description: **585C Size 60**

Service Description:

Emerson Process Management Germany

Contact: **Markus Czellnik**Sales Office Reference: **097-044765**Quote: **097-IP-201013-0044765**Date Last Modified: **14/10/2020**

Lead Time:

Rev: **A**Sliding Stem Actuators: **585C-320-3865073**Actuator Size: **60**Supply Pressure: **150 psig**Yoke Boss Size: **3 9/16**Actuator Stem Connection: **3/4 Inch**Spring Number: **None**Top Mounted Handwheel: **No**Side Mounted Handwheel: **No**SMHW Orientation Per GE52353: **Not App**Bypass Valve: **Not App**Bypass Tubing & Fitting Material: **Not App**Travel: **8 Inch**O-Ring Material: **NBR**Yoke Locknut: **None**Positioner: **None**Signal Connections: **1/4 NPT**Fail Action: **None**Fails Valve: **Not App**Actuator Style: **Piston**Low Ambient Temperature: **No**Cylinder Bolting/Fasteners: **Steel NCF Coated**Yoke Material: **Ductile Iron**Valve Action: **PDTC**Spring Force at Zero Travel: **0**Spring Force at Full Travel: **0**Max Cylinder Pressure: **150 psig**Actuator Max Allowable Thrust: **8300**Signal Connection Orientation: **Front**Piston Area: **55.5 in2**Supplemental Attribute: **Not App**

Ps:

Actuator Type: **585C**Manufacturer: **Fisher**Supply: **Air**

Max Handwheel Thrust:

Vo:

Vm:

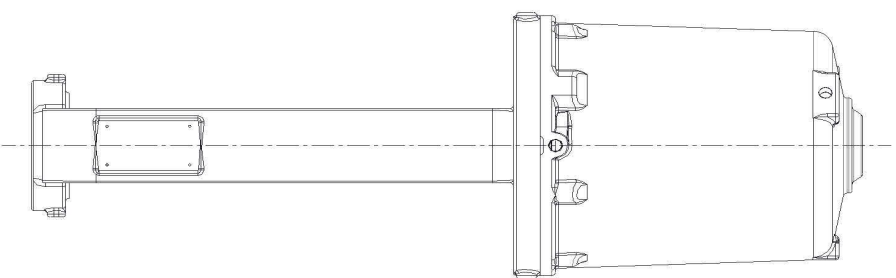
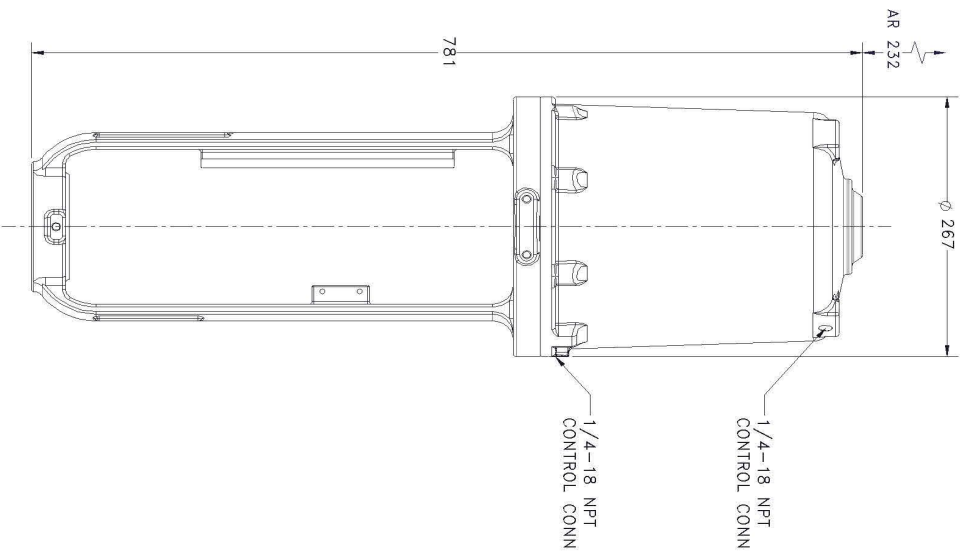
Pf Exhaust:

Pi Exhaust:

Pf Fill:

Pi Fill:

Stroke Speed Calculation: **Yes**Dual Spring Fail: **No**World Area Selections: **Europe**



DIMENSIONS CERTIFIED CORRECT BY FISHER CONTROLS

FISHER

© Fisher Controls Intl, LLC 2020

CUST: EL O MATIC GMBH
 CUST REF NO.: ANFRAGE 585C
 FISHER REF NO.: 097-IP-201013-0044765
 TAG NO.:
 PROJECT NAME:

585C ACTUATOR SIZE 60

CUST ITEM: 0100

S.NO.:

| REV | DATE | BY | CHKD | APPD |
|-----|----------|-----|------|------|
| A | 14-07-20 | EJS | | |

SCALE: NONE



TOTAL CALCULATED WT +/- 10%
 TOTAL WEIGHT: 35 kg
 UNLESS OTHERWISE SPECIFIED
 UNIT OF MEASURE: MM

GENERAL ARRANGEMENT



SHEET 1 OF 1

A

AR = ACTUATOR REMOVAL CLEARANCE